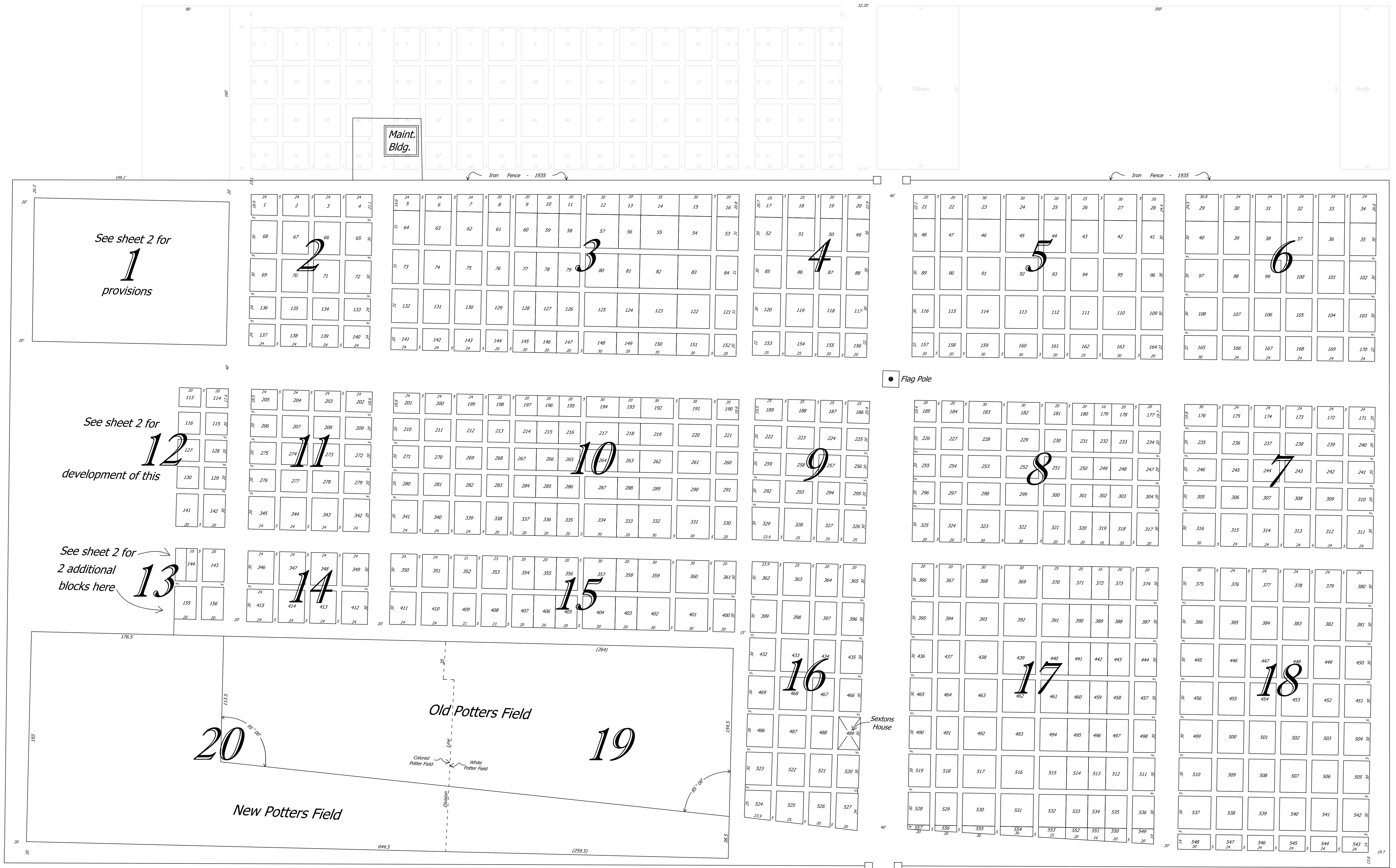


Eighth

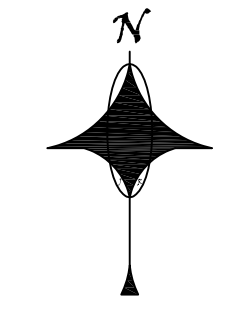
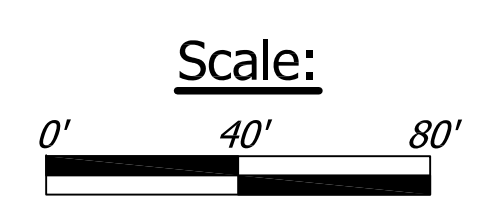
OAK LAWN CEMETERY

Street



PEORIA AVE.

PEORIA AVE.



ELEVENTH STREET

Note: Sections numbered and corrections made in 1935

Sheet 1 of 3 sheets.

STREET

Drawing drafted into digital format using AutoCAD 2010 8/2/2010 by Joe Robberson

I hereby certify that I have made a true and accurate survey of blocks 4 and 5 of the Oak Lawn Addition to Tulsa for an Addition to Oak Lawn Cemetery and the above Plat is true of same March 26th to April 3rd 1917
 C. K. McKendry Civil Engineer
 by G.E.W.