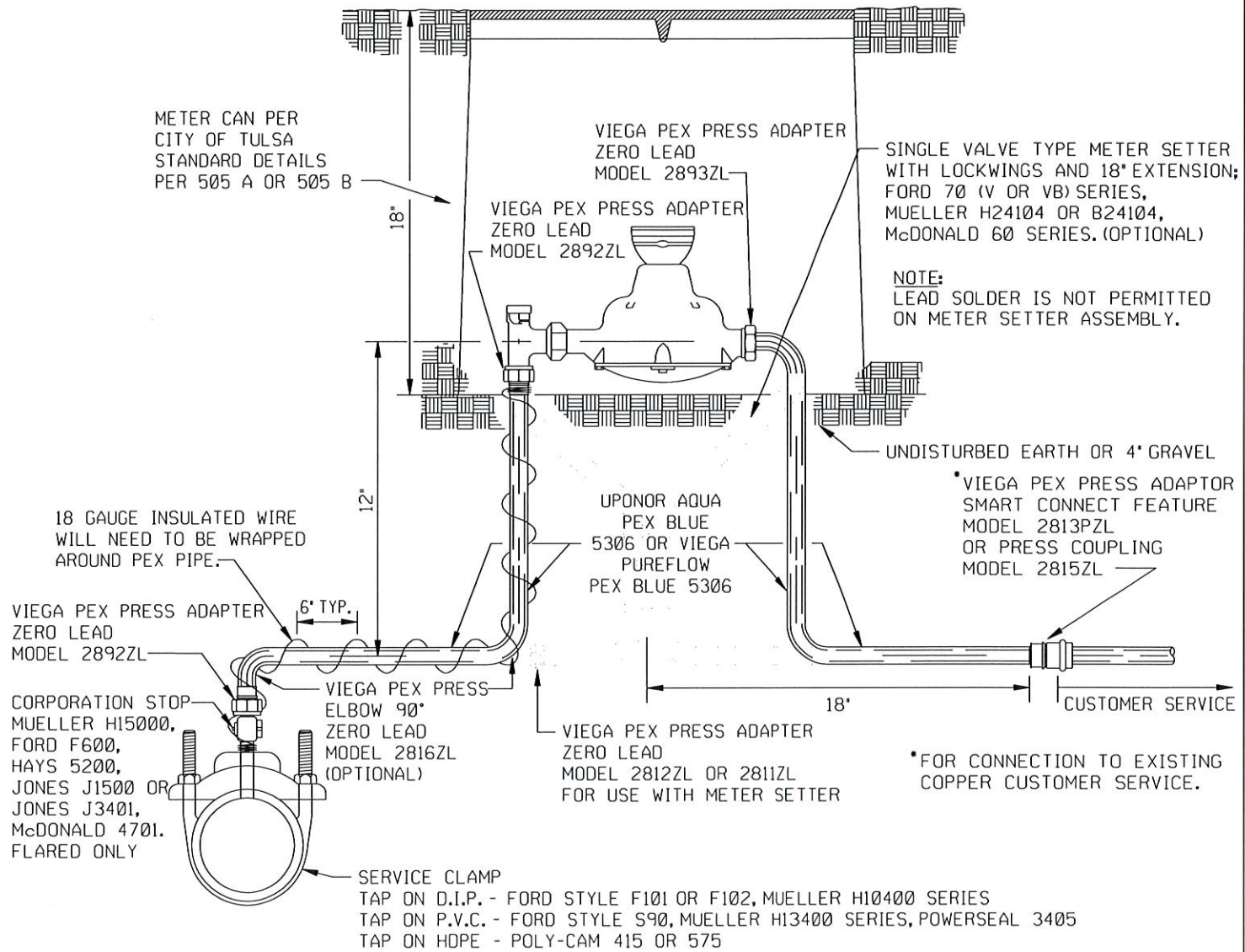


PAT#: /e:/pwrts/std/DCN.stds/501A-mtr-set-3qtr.dgn DJN 03/13/2023



METER CAN PER CITY OF TULSA STANDARD DETAILS PER 505 A OR 505 B

VIEGA PEX PRESS ADAPTER ZERO LEAD MODEL 2893ZL

SINGLE VALVE TYPE METER SETTER WITH LOCKWINGS AND 18" EXTENSION; FORD 70 (V OR VB) SERIES, MUELLER H24104 OR B24104, McDONALD 60 SERIES. (OPTIONAL)

VIEGA PEX PRESS ADAPTER ZERO LEAD MODEL 2892ZL

NOTE: LEAD SOLDER IS NOT PERMITTED ON METER SETTER ASSEMBLY.

UNDISTURBED EARTH OR 4" GRAVEL

*VIEGA PEX PRESS ADAPTOR SMART CONNECT FEATURE MODEL 2813PZL OR PRESS COUPLING MODEL 2815ZL

18 GAUGE INSULATED WIRE WILL NEED TO BE WRAPPED AROUND PEX PIPE.

UPONOR AQUA PEX BLUE 5306 OR VIEGA PUREFLOW PEX BLUE 5306

VIEGA PEX PRESS ADAPTER ZERO LEAD MODEL 2892ZL

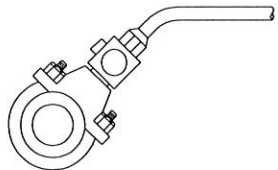
CORPORATION STOP MUELLER H15000, FORD F600, HAYS 5200, JONES J1500 OR JONES J3401, McDONALD 4701. FLARED ONLY

VIEGA PEX PRESS ELBOW 90° ZERO LEAD MODEL 2816ZL (OPTIONAL)

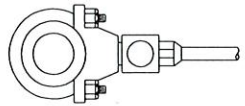
VIEGA PEX PRESS ADAPTER ZERO LEAD MODEL 2812ZL OR 2811ZL FOR USE WITH METER SETTER

*FOR CONNECTION TO EXISTING COPPER CUSTOMER SERVICE.

SERVICE CLAMP
TAP ON D.I.P. - FORD STYLE F101 OR F102, MUELLER H10400 SERIES
TAP ON P.V.C. - FORD STYLE S90, MUELLER H13400 SERIES, POWERSEAL 3405
TAP ON HOPE - POLY-CAM 415 OR 575



45° TAP



SIDE TAP

- NOTE:
1. SERV. CLAMP REQUIRED FOR ALL SIZES PVC, AND FOR 4" AND SMALLER IRON. FOR 6" AND LARGER IRON, TAP DIRECTLY.
 2. TAP AT ANGLE NECESSARY TO PROVIDE 30" OF COVER OVER THE SERVICE LINE.
 3. LOCATE PEX LINE AT LEAST 50 FEET HORIZONTALLY FROM ANY GASOLINE STORAGE TANK AND LINES.
 4. PEX SHALL BE 1" MINIMUM.

UPONOR AQUA PEX BLUE 5306 OR VIEGA PUREFLOW PEX BLUE 5306 TO BE USED ON NON-ARTERIAL STREETS ONLY

STANDARD METER SETTINGS FOR 5/8" X 3/4" AND 3/4" WATER SERVICE

CITY OF TULSA, OKLAHOMA ENGINEERING SERVICES DEPARTMENT

DRAWN BY: R.M.O.	APPROVED
CHECKED BY: HAS	
DATE: MARCH 2023	
NOT TO SCALE	STANDARD NO. 501A