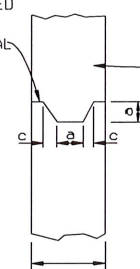


CONTRACTION JOINT

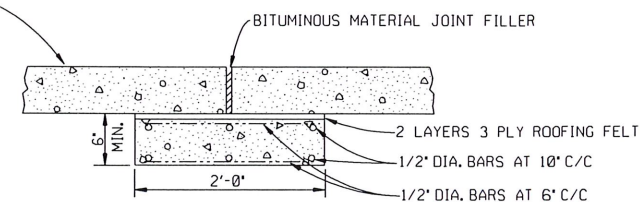
JOINT TO BE PAINTED WITH A COAT OF BITUMINOUS MATERIAL



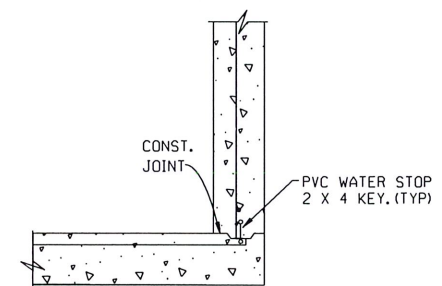
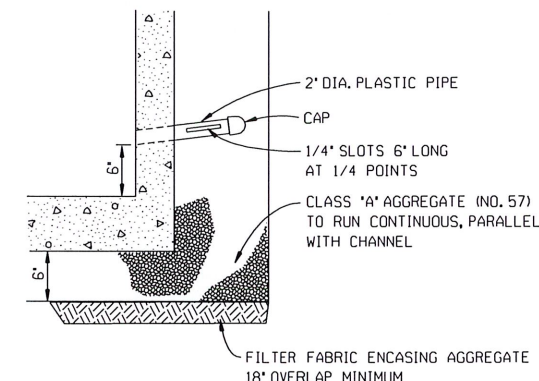
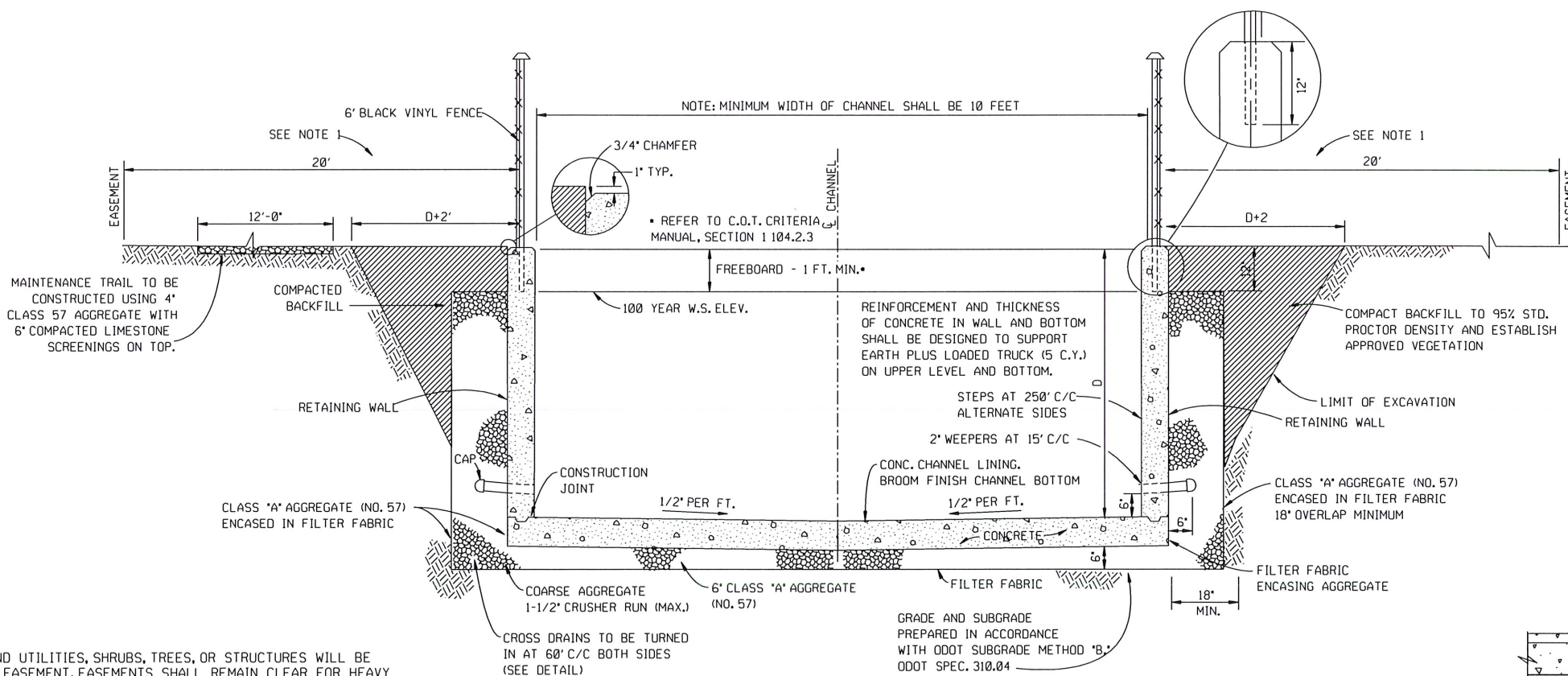
TO BE USED AT END OF DAY'S CONSTRUCTION OR ANY STOPPAGE OF 30 MINUTES OR MORE. MINIMUM SPACING SHALL BE 80' C/C

WALL THICKNESS

WALLS	a	b	c
7' TO 9'	2'	2'	1'
9' TO 12'	2'	3'	1'
12' TO 15-1/2'	3'	4'	2'



TRANSVERSE CONSTRUCTION AND EXPANSION JOINT



CONSTRUCTION JOINT

NOTE:

1. NO ABOVE GROUND UTILITIES, SHRUBS, TREES, OR STRUCTURES WILL BE CONSTRUCTED IN EASEMENT. EASEMENTS SHALL REMAIN CLEAR FOR HEAVY EQUIPMENT ACCESS OR PASSAGE.
2. CHANNEL SHALL BE CONSTRUCTED WITH ODOT CLASS 'A' CONCRETE. NO FLY ASH.
3. GRADING SHALL BE 1' HIGHER THAN CONCRETE PRIOR TO SLAB SOD APPLICATION.
4. ALL EXPOSED EDGES OF CONCRETE SHALL BE CHAMFERED 3/4'.
5. ALL DISTURBED AREAS SHALL BE SLAB SODDED ON 4" OF TOPSOIL.
6. JOINT LAYOUT TO BE DESIGNED BY ENGINEER.
7. AGGREGATE CLASS 'A' SHALL BE PLACED ON FILTER FABRIC. FILTER FABRIC TO BE WRAPPED UP AND AROUND TOP PERIMETER FOR AN 18" LAP DISTANCE.
8. CLASS 'A' AGGREGATE FOR UNDERDRAINS, SUBDRAINS, AND BASE SHALL BE IN ACCORDANCE WITH ODOT STANDARD SPEC. 303.
9. GRADE AND SUBGRADE WITHIN THE CHANNEL SHALL BE PREPARED ACCORDING TO SUBGRADE METHOD 'B' IN ACCORDANCE WITH ODOT STANDARD SPEC 310.04.
10. STEEL REINFORCING AND WATERSTOP DESIGN TO BE DESIGNED BY ENGINEER.

 CITY ENGINEER	CITY OF TULSA, OKLAHOMA ENGINEERING SERVICES DEPARTMENT	
	VERTICAL WALL CHANNEL (FOR REHAB AND REFERENCE ONLY)	
 DESIGN MANAGER	DATE: MARCH 2022	STD. 784

REVISION	BY	DATE