

* REFER TO C.O.T. CRITERIA MANUAL, SECTION 1104.3.1(a.)

6" CLASS "A" AGGREGATE (NO. 57) PER ODOT SPEC. 701.06
 #4 BARS AT 12" CTRS. E.W.
 FILTER FABRIC

CONC. CHANNEL LINING, BROOM FINISH CHANNEL BOTTOM
 MIN. 8" CONC.
 BOTTOM SLAB SHALL BE DESIGNED FOR LOADS EQUAL TO A LOADED 5 C.Y. DUMP TRUCK

STEPS AT 250' CENTER ALTERNATE SIDES

10% SLOPE TO CHANNEL 15' C/C

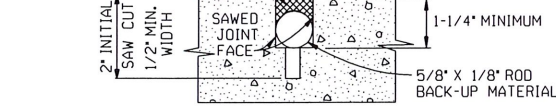
SLOPE 1/2' : 1'-0"

BOTTOM WIDTH MIN. 8'-0"

SUB DRAINS SHALL BE TURNED IN AT 60' C/C (SEE TURN IN DETAIL)

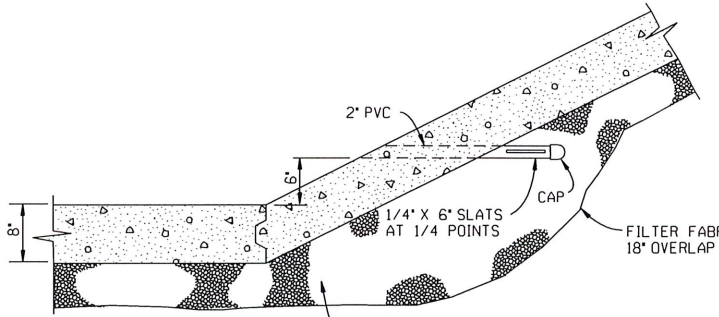
GRADE AND SUBGRADE PREPARED IN ACCORDANCE WITH SUBGRADE METHOD "B" ODOT SPEC. 310.04

SEAL WITH SELF-LEVELING POLYURETHANE (VULKEM 116 OR EQUAL) AND BACKER ROD 1/4" TO 1/2" SEALANT DEPTH.



KEYED CONST. JOINT

CONTRACTION JOINT



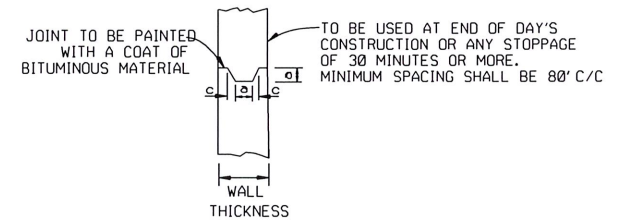
MAX. 1-1/2" CLASS "A" (NO. 57) AGGREGATE TO RUN CONTINUOUS PARALLEL WITH CHANNEL

TURN IN DETAIL

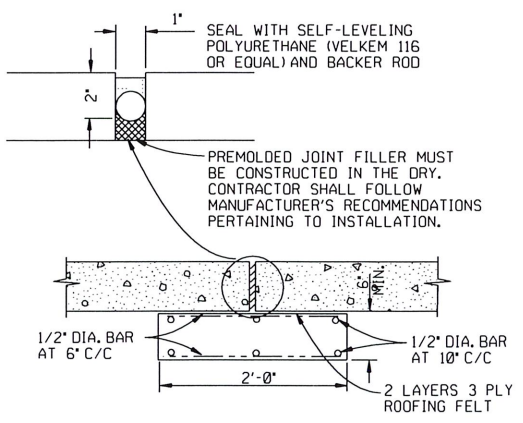
NOTE:

1. NO ABOVE GROUND UTILITIES, SHRUBS, TREES, OR STRUCTURES WILL BE CONSTRUCTED IN EASEMENT. EASEMENTS TO REMAIN CLEAR FOR HEAVY EQUIPMENT ACCESS OR PASSAGE.
2. CHANNEL SHALL BE CONSTRUCTED WITH ODOT CLASS "A" CONCRETE, NO FLY ASH.
3. GRADING ADJACENT TO CONCRETE SHALL BE 1" HIGHER THAN CONCRETE SURFACE PRIOR TO SLAB SOD APPLICATION.
4. ALL EXPOSED EDGES OF CONCRETE SHALL BE CHAMFERED 3/4".
5. ALL DISTURBED AREAS SHALL BE SLAB SODDED ON 4" OF TOPSOIL.
6. JOINT LAYOUT TO BE DESIGNED BY ENGINEER.
7. AGGREGATE CLASS "A" SHALL BE PLACED ON FILTER FABRIC. FILTER FABRIC TO BE WRAPPED UP AND AROUND TOP PERIMETER FOR AN 18" LAP DISTANCE.
8. CLASS "A" AGGREGATE FOR UNDERDRAINS, SUBDRAINS, AND BASE SHALL BE IN ACCORDANCE WITH ODOT STANDARD SPEC. 701.06 NO. 57. PLACING SHALL BE IN ACCORDANCE WITH ODOT STANDARD SPEC. 303.
9. GRADE AND SUBGRADE WITHIN THE CHANNEL SHALL BE PREPARED ACCORDING TO SUBGRADE METHOD "B" PER ODOT SPEC 310.04.
10. STEEL REINFORCING TO BE DESIGNED BY ENGINEER.
11. FENCE TO BE AS SHOWN ON PLANS.

* FILTER FABRIC SHALL MEET APPLICABLE ASTM SPECS AND SHALL BE DESIGNED TO MEET SOIL SIZE AND PERMEABILITY REQUIREMENTS. MINIMUM OVERLAP 18" AND TOED IN TOP AND BOTTOM.



WALLS	a	b	c
7' TO 9'	2"	2"	1"
9' TO 12'	2"	3"	1"
12' TO 15-1/2'	3"	4"	2"



TRANSVERSE CONST. AND EXPANSION JOINT

(TO BE USED AT END OF DAY'S CONSTRUCTION OR ANY STOPPAGE OF 30 MINUTES OR MORE. MINIMUM SPACING SHALL BE 80' C/C.)

K. J. Kelly
CITY ENGINEER

HAS
DESIGN MANAGER

CITY OF TULSA, OKLAHOMA
ENGINEERING SERVICES DEPARTMENT

CONCRETE LINED CHANNEL
(FOR REHAB AND REFERENCE ONLY)

DATE: MARCH 2022 STD. 783

REVISION	BY	DATE