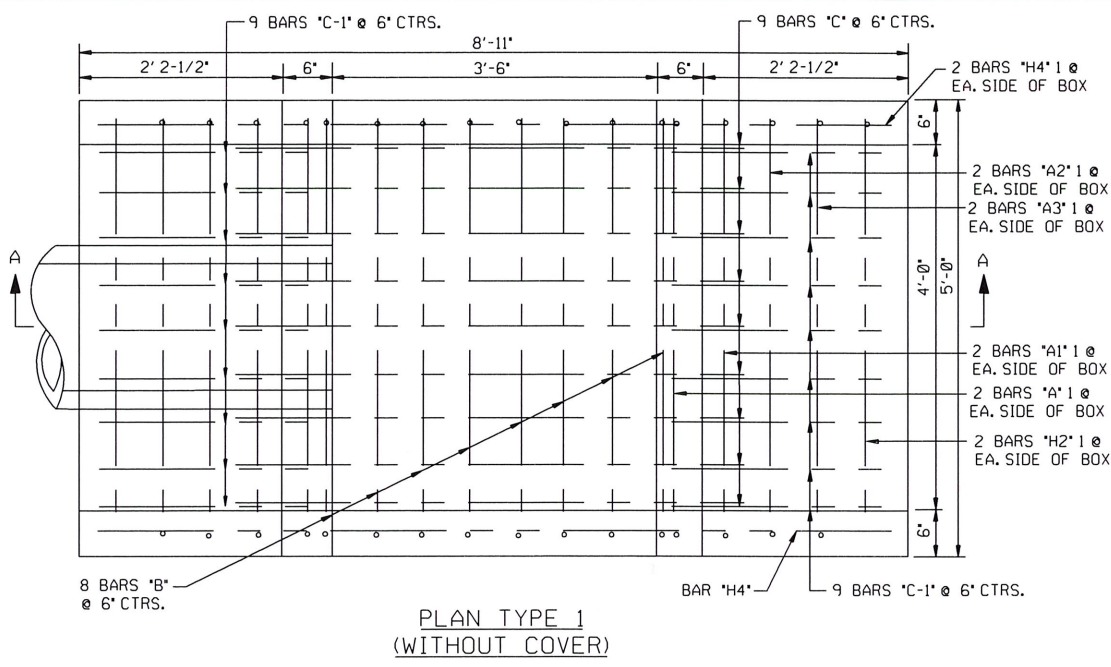
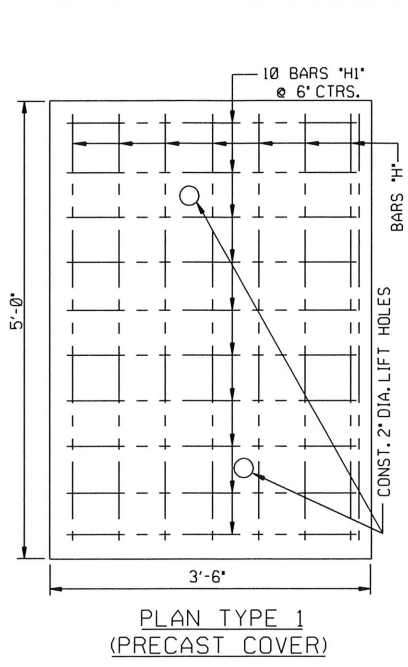


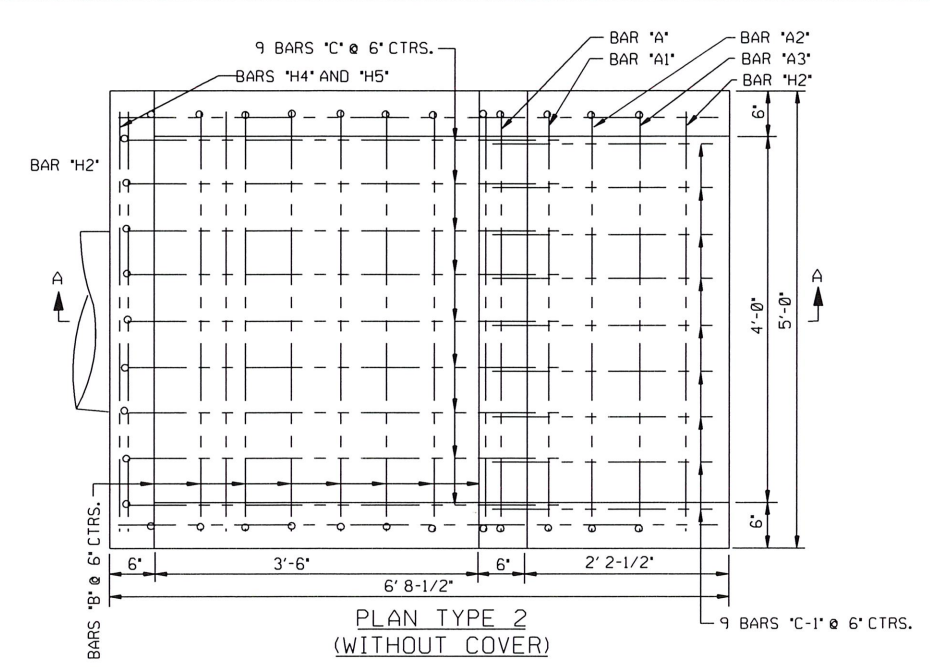
PATH NAME: /E1/PARTS/STD/DCN/STD/771-STD-DROP-INLET-30-42.DGN LFM 05/16/2012



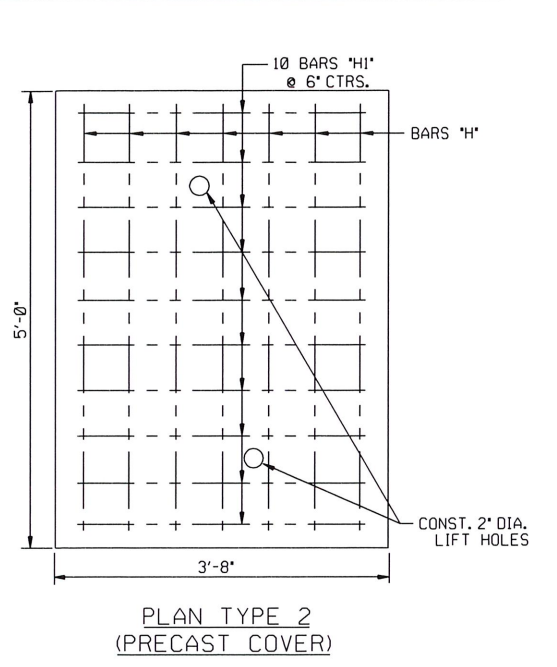
PLAN TYPE 1 (WITHOUT COVER)



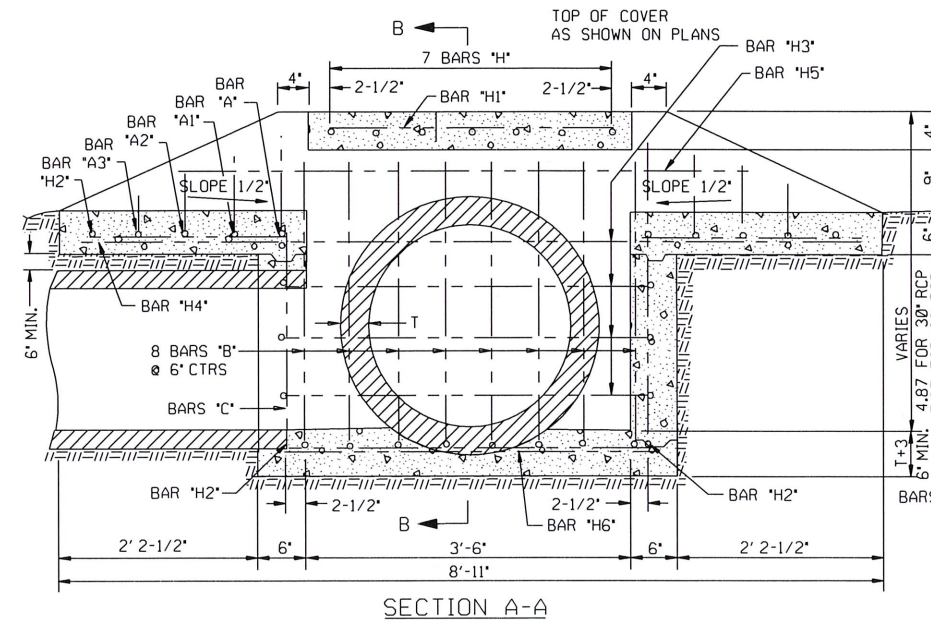
PLAN TYPE 1 (PRECAST COVER)



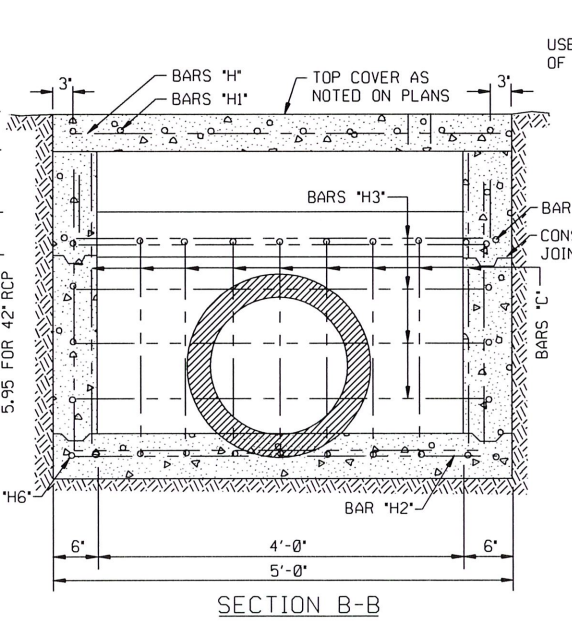
PLAN TYPE 2 (WITHOUT COVER)



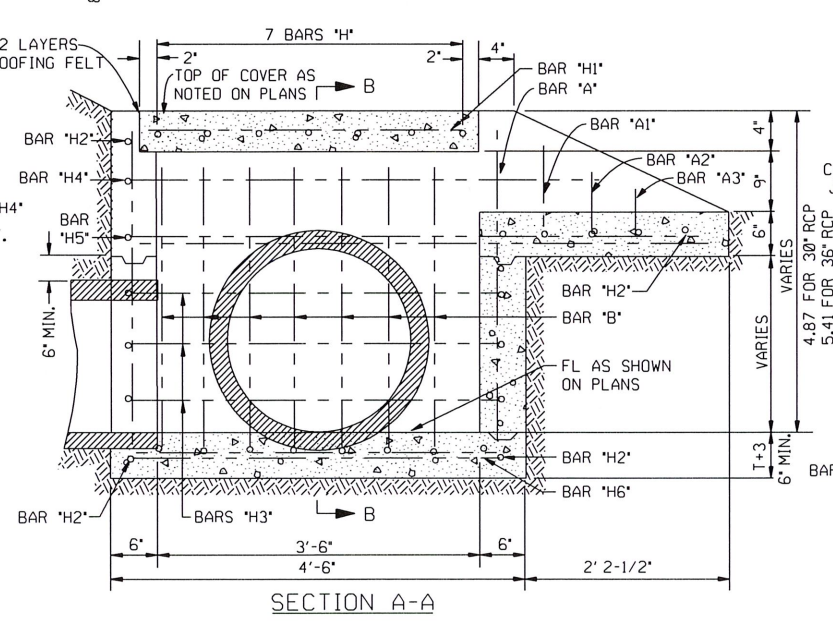
PLAN TYPE 2 (PRECAST COVER)



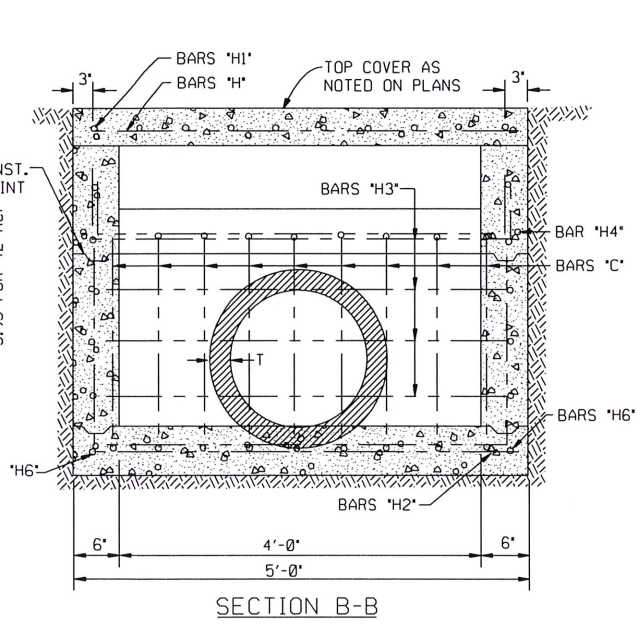
SECTION A-A



SECTION B-B



SECTION A-A



SECTION B-B

NOTE: REINFORCING STEEL TO BE CUT AND/OR BENT TO CLEAR PIPES IN THE FIELD.

BAR LIST

		DESIGN NO. 1		
		30" RCP	36" RCP	42" RCP
MARK	SIZE	QUAN.	SHAPE	LENGTH
A	3/8"	2	BENT 6'-7"	2 BENT 6'-7"
A1	3/8"	2	BENT 6'-2"	2 BENT 6'-2"
A2	3/8"	2	BENT 5'-9"	2 BENT 5'-9"
A3	3/8"	2	BENT 5'-4"	2 BENT 5'-4"
B	3/8"	8	BENT 13'-5"	8 BENT 14'-7"
C	3/8"	9	BENT 12'-11"	9 BENT 14'-1"
C1	3/8"	18	STR. 2'-4"	18 STR. 2'-4"
H	1/2"	7	STR. 4'-8"	7 STR. 4'-8"
H1	1/2"	10	STR. 3'-1"	10 STR. 3'-1"
H2	3/8"	4	STR. 4'-7"	4 STR. 4'-7"
H3	3/8"	7	BENT 17'-11"	7 BENT 17'-11"
H4	3/8"	2	STR. 8'-6"	2 STR. 8'-6"
H5	3/8"	2	STR. 6'-0"	2 STR. 6'-0"
H6	3/8"	2	STR. 4'-1"	2 STR. 4'-1"

		QUANTITIES		
		30" RCP	36" RCP	42" RCP
CLASS 'A' CONCRETE		2.49	2.65	2.80
REINFORCING STEEL		228	241	260
QUANTITIES PER FT. OF VERTICAL HEIGHT CLASS 'A' CONC. @ 31 REINFORCING STEEL 26.26 LBS. PER C.Y.				

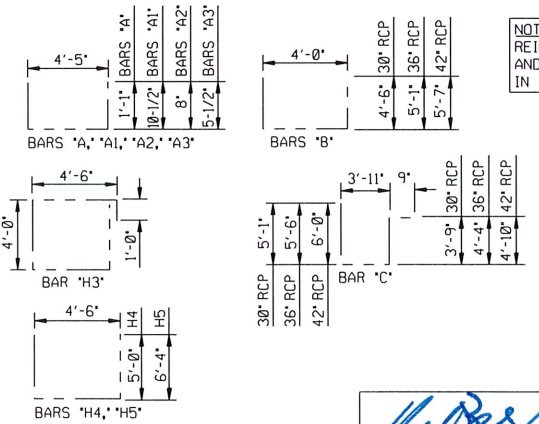
GENERAL NOTES

- ALL CONSTRUCTION SHALL BE IN ACCORDANCE WITH CITY OF TULSA STANDARD SPECIFICATIONS.
- ALL EXPOSED CONC. SURFACES TO BE CARBORUNDUM FINISHED.
- ALL EXPOSED CONC. EDGES SHALL HAVE A 1/2" CHAMFER.
- ALL REINFORCING STEEL TO BE DEFORMED BARS.
- FOR EACH FT. ADDITIONAL HEIGHT, ADD 2' TO BARS B AND C, ADD BARS H3 AT 6" C/C.
- REINFORCED CONC. PIPES SHALL CONFORM TO THE REQUIREMENTS OF ASTM C-76-596 (AASHTO M-170-60) CLASS III UNLESS OTHERWISE DESIGNATED.
- CLASS A CONC. QUANTITIES ARE COMPUTED USING WALL THICKNESS TAKEN FROM WALL B COLUMN OF ASTM AND AASHTO TABLES.

BAR LIST

		DESIGN NO. 2		
		30" RCP	36" RCP	42" RCP
MARK	SIZE	QUAN.	SHAPE	LENGTH
A	3/8"	1	BENT 6'-7"	1 BENT 6'-7"
A1	3/8"	1	BENT 6'-2"	1 BENT 6'-2"
A2	3/8"	1	BENT 5'-9"	1 BENT 5'-9"
A3	3/8"	1	BENT 5'-4"	1 BENT 5'-4"
B	3/8"	8	BENT 13'-0"	8 BENT 14'-2"
C	3/8"	9	BENT 13'-6"	9 BENT 14'-6"
C1	3/8"	9	STR. 2'-4"	9 STR. 2'-4"
H	1/2"	7	STR. 4'-8"	7 STR. 4'-8"
H1	1/2"	10	STR. 3'-3"	10 STR. 3'-3"
H2	3/8"	4	STR. 4'-7"	4 STR. 4'-7"
H3	3/8"	7	BENT 17'-11"	7 BENT 17'-11"
H4	3/8"	1	BENT 14'-7"	1 BENT 14'-7"
H5	3/8"	1	BENT 17'-2"	1 BENT 17'-2"
H6	3/8"	2	STR. 4'-1"	2 STR. 4'-1"

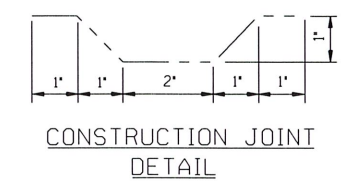
		QUANTITIES		
		30" RCP	36" RCP	42" RCP
CLASS 'A' CONCRETE		2.32	2.49	2.66
REINFORCING STEEL		262	278	294
QUANTITIES PER FT. OF VERTICAL HEIGHT CLASS 'A' CONC. @ 31 REINFORCING STEEL 26.26 LBS. PER C.Y.				



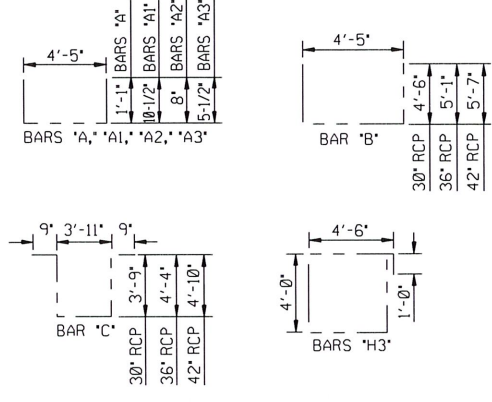
BAR BENDING DIAGRAMS

REVISION	BY	DATE

NOTE: REINFORCING STEEL TO BE CUT AND/OR BENT TO CLEAR PIPES IN THE FIELD.



BAR BENDING DIAGRAMS



[Signature]
CITY ENGINEER
[Signature]
DESIGN MANAGER

CITY OF TULSA, OKLAHOMA
ENGINEERING SERVICES DEPARTMENT
STANDARD DROP INLET
30", 36", AND 42"
WITH NO ACCESS MANHOLE
DATE: MARCH 2022
STD. 771