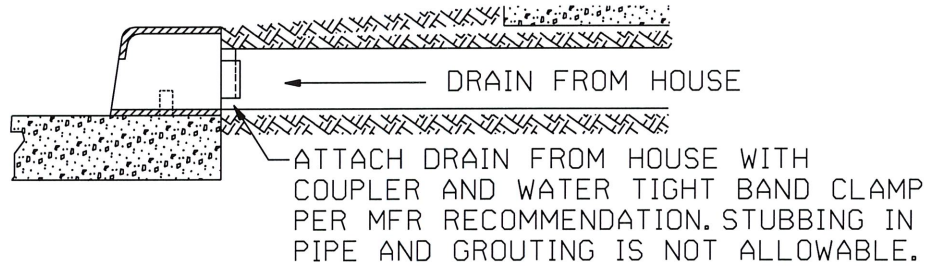
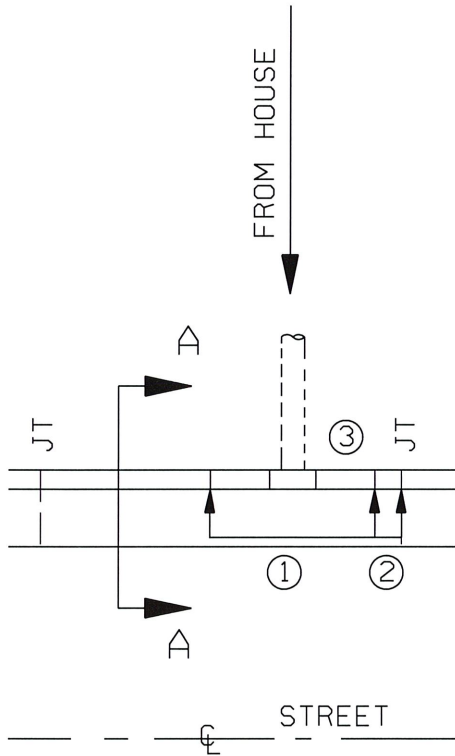


STORM WATER CURB OPENING



SECTION A-A

RESIDENTIAL CURB INLET



1. CONTRACTOR SHALL LOCATE AND RECONNECT ANY SIDE DRAINS FROM ADJACENT PROPERTY THROUGH THE CURB THAT ARE WITHIN CURB AND GUTTER AREA BEING REMOVED AND REPLACED.
2. INSTALL R-3262-3 SERIES HEAVY DUTY STORM WATER CURB OPENING BY NEENAH OR APPROVED EQUAL.
3. FIELD VERIFY SIZE AND LOCATION PRIOR TO PAVING OPERATIONS.
4. CONTRACTOR SHALL CAST INLETS IN PLACE DURING CURB AND GUTTER.
5. TO BE USED FOR ALL NEW OR EXISTING CURB PENETRATIONS.

- ① CURB AND GUTTER TO BE REMOVED MUST BE A MINIMUM OF 3 FEET WIDE.
- ② IF NEW JOINT (JT) IS LESS THAN 3 FEET, REMOVE AND REPLACE CURB AND GUTTER TO EXISTING JOINT.
- ③ MINIMUM DISTANCE BETWEEN STORM WATER CURB OPENING AND NEW JOINT (JT) SHALL BE 1 FT.

RESIDENTIAL STORM WATER CURB OPENING	
CITY OF TULSA, OKLAHOMA ENGINEERING SERVICES DEPARTMENT	
DRAWN BY: R.M.O. CHECKED BY: <i>HAS</i> DATE: MARCH 2022	APPROVED
NOT TO SCALE	STANDARD NO. 758