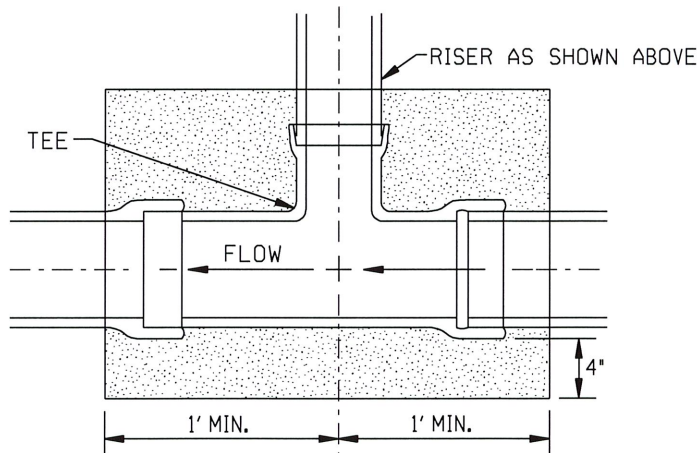
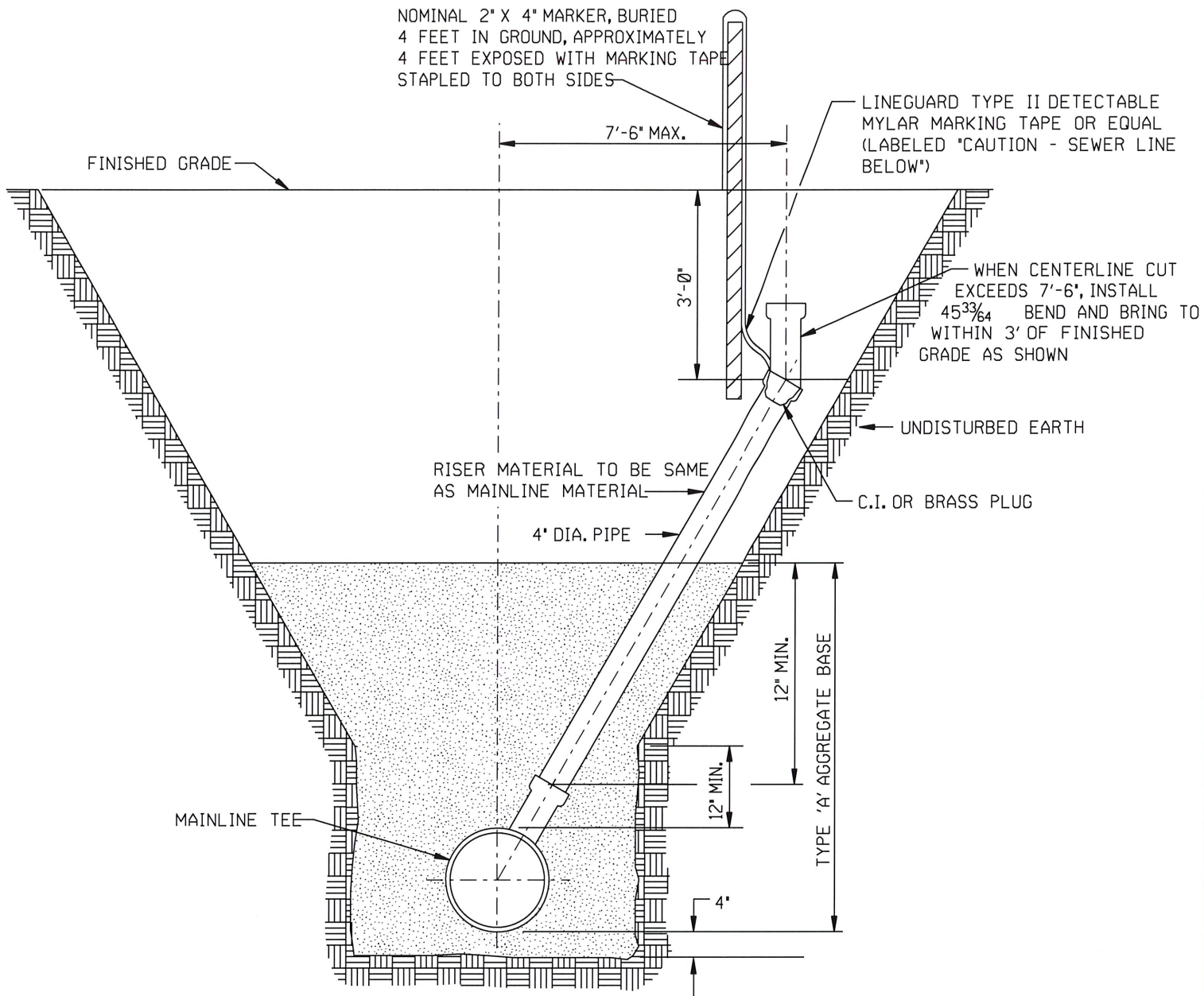


PATH NAME: /E1/PARTS/STD/DGN_STDS/363-RISER-SLOPED-TRENCH.DGN RMO 07/18/2012



RISER DETAIL WITH SLOPED TRENCH	
CITY OF TULSA, OKLAHOMA ENGINEERING SERVICES DEPARTMENT	
DRAWN BY: R.M.O. CHECKED BY: <i>HAS</i> DATE: MARCH 2022	APPROVED
NOT TO SCALE	STANDARD NO. 363